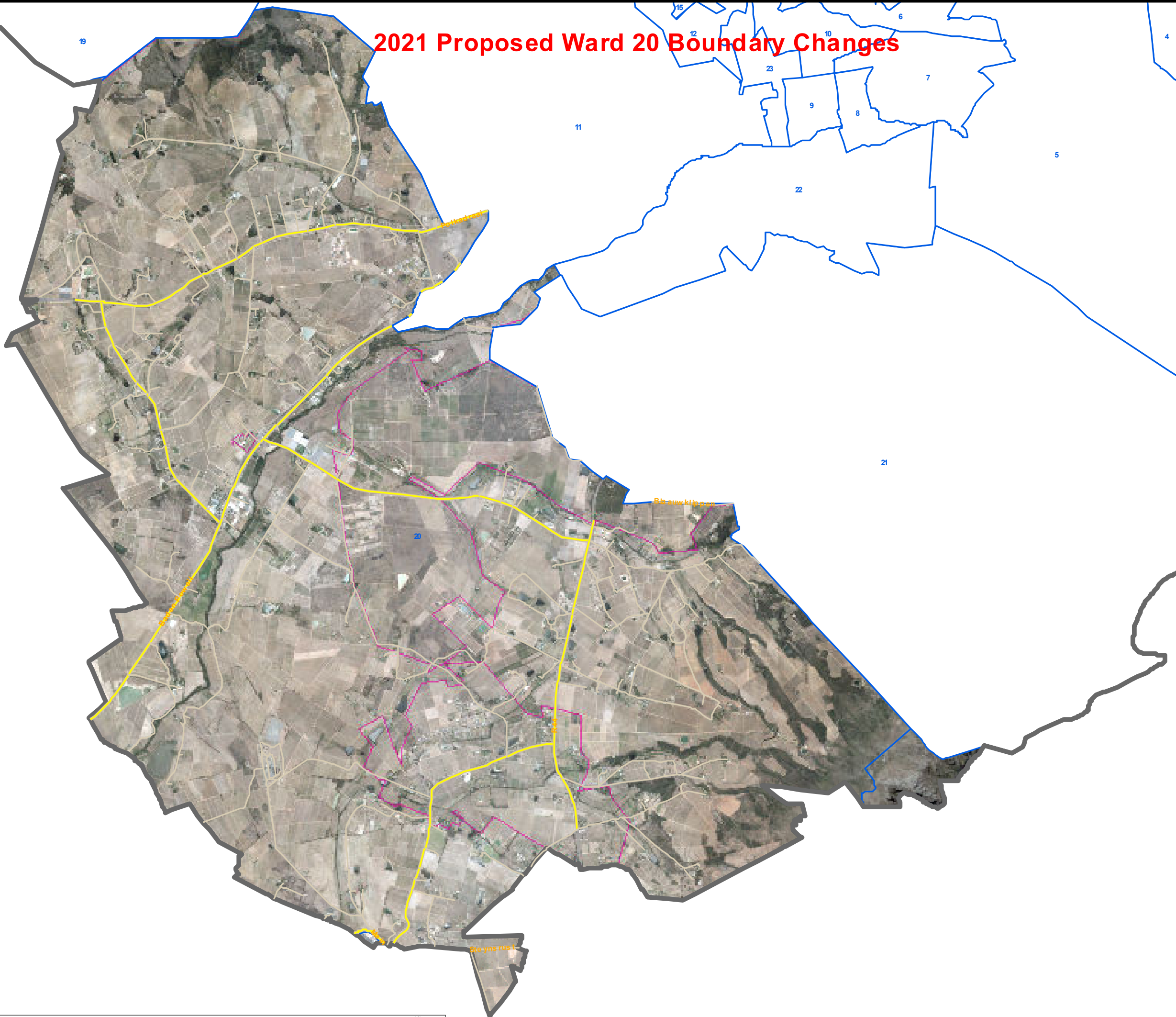


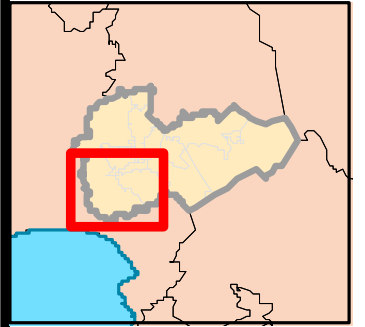
# 2021 Proposed Ward 20 Boundary Changes



STELLENBOSCH MUNICIPALITY

### Legend

- Roads**  
Representation: Google\_Streetmap\_20
- Main and Secondary Roads
  - Other Roads
  - Other Municipalities
  - Stellenbosch
  - Other Wards
  - Ward 20
  - Suburbs



STELLENBOSCH MUNICIPALITY (WC024)

Data Source: SG Office, Stellenbosch GIS



1:56 097

Stellenbosch Municipality  
Planning & Economic Development  
Spatial Planning Heritage & Environment  
Created by: GIS Unit

Stellenbosch Municipality  
Street Address:  
71 Plein Street, Stellenbosch, 7600

PO Box 17, Stellenbosch, 7599  
Tel: 021 808 8333

This map is a representation of the information currently held by the Stellenbosch Municipality. While every effort has been made to ensure the accuracy of the product, Council accepts no responsibility for any errors or omissions nor for any loss or damage alleged to be suffered by anyone as a result of the publication of the map and the information on it or as a result of misuse of the information provided herein.

