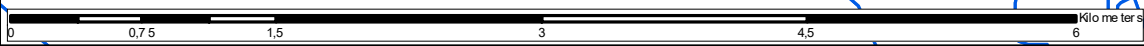
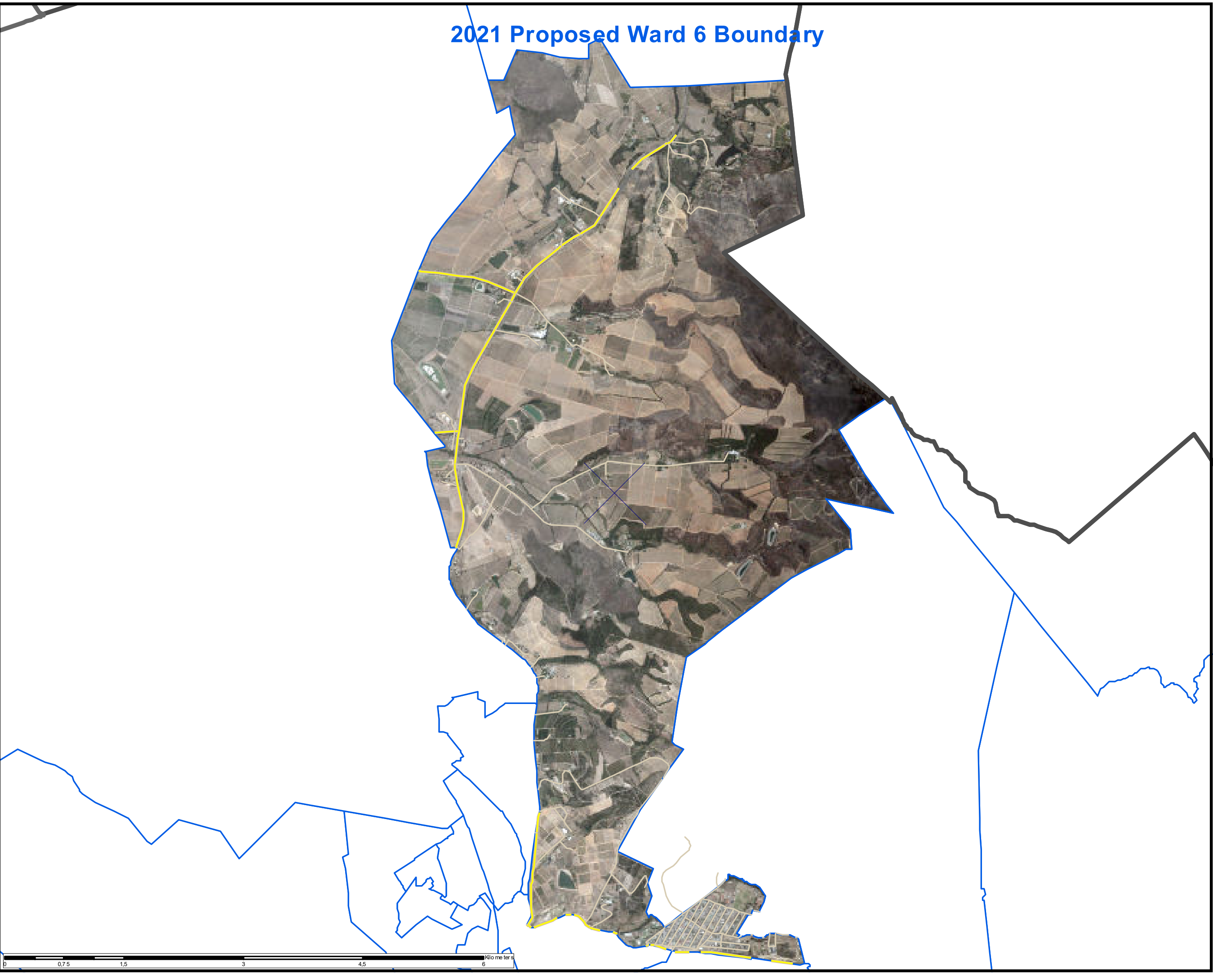


2021 Proposed Ward 6 Boundary



STELLENBOSCH MUNICIPALITY

Legend

Ward 6_Roads

Representation: Google_Streetmap_5

- Main and Secondary Roads
- Other Roads
- Other Municipalities
- Stellenbosch
- Other Wards
- Ward 6
- Other Municipalities
- Stellenbosch



STELLENBOSCH MUNICIPALITY
(WC024)

Data Source: SG Office, Stellenbosch GIS



1:42 597

Stellenbosch Municipality
Planning & Economic Development
Spatial Planning Heritage & Environment
Created by: GIS Unit

Stellenbosch Municipality
Street Address:
71 Plein Street, Stellenbosch, 7600
PO Box 17, Stellenbosch, 7599
Tel: 021 808 8333

This map is a representation of the information currently held by the Stellenbosch Municipality. While every effort has been made to ensure the accuracy of the product, Council accepts no responsibility for any errors or omissions nor for any loss or damage alleged to be suffered by anyone as a result of the publication of the map and the information it or as a result of misuse of the information provided herein.