



STLLENBOSCH MUNICIPALITY

STELLENBOSCH · PNIEL · FRANSCHHOEK

MUNISIPALITEIT · UMASIPALA · MUNICIPALITY

☎021-808 8222

Roads, Transport and Stormwater

MUNICIPAL NOTICE No. 74/2022

DISTILLERY ROAD BRIDGE, BOSMAN'S CROSSING

Please note that due to construction activities associated with the New Distillery Road Bridge, the Distillery Road needs to be temporarily closed, for 4 occurrences of up to 1 hour each to vehicular traffic. These temporary closures will take effect during the following times:

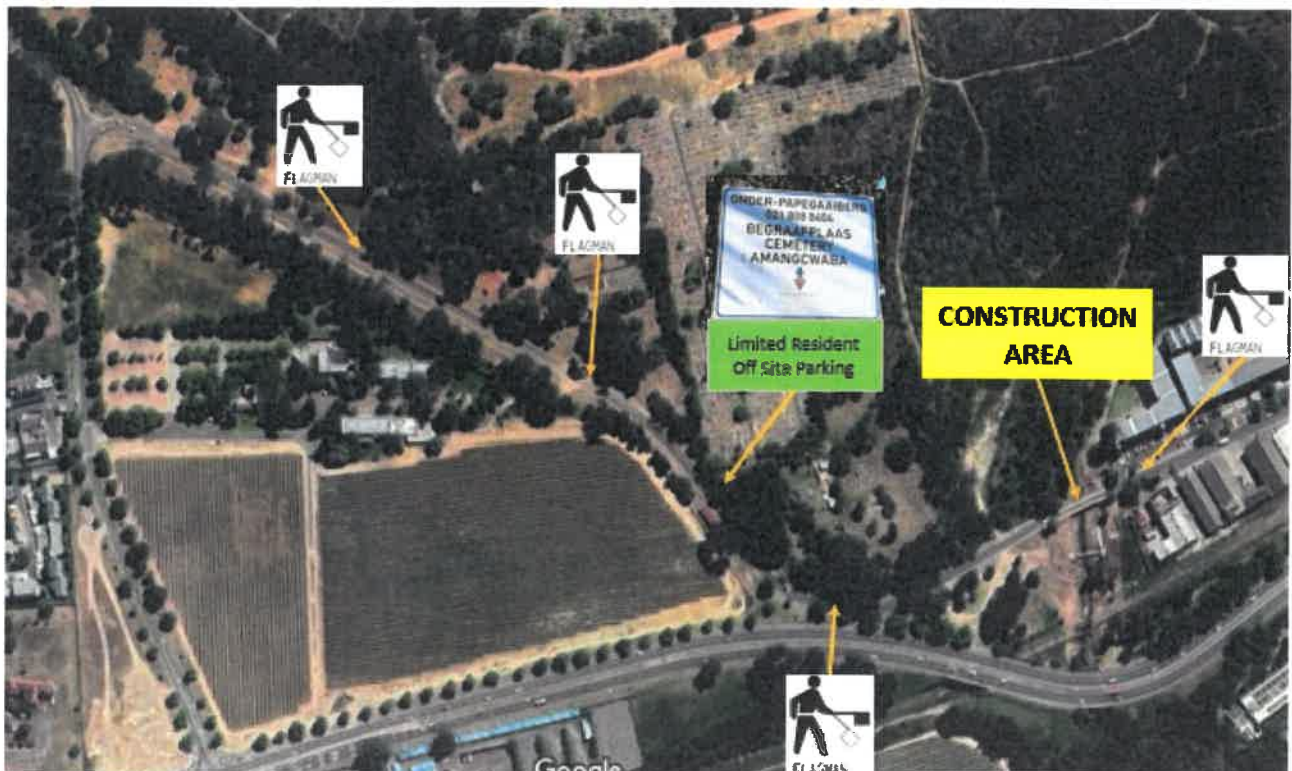
- Saturday, 04 June 2022 between 12:00 and 16:00.
- Sunday, 05 June 2022 between 09:00 and 16:00.

The road will be open to traffic between the 4 occurrences. The above closures are for necessary to lift and place 4 number 30-ton precast concrete beams into position, which will form the 1st half of the New Road Distillery Bridge.

Traffic cannot be accommodated on the Distillery Road Bridge during these temporary closures. Limited resident off-site parking will be available at the Onder Papegaaiberg Cemetery as indicated below.

Pedestrian traffic can be safely accommodated over the bridge when required.

Every effort will be made to minimize inconveniences, we thank you in anticipation for your understanding and patience. For further enquiries please contact 021 808 8222.




Deon Louw

Director: Infrastructure Services

31/05/2022